

FREE STANDING DRINKING FOUNTAIN

FEATURES;

- Radius front.
- High splashback.
- Bottle filler.
- Easy to install.
- Wall fixed.
- No exposed plumbing.

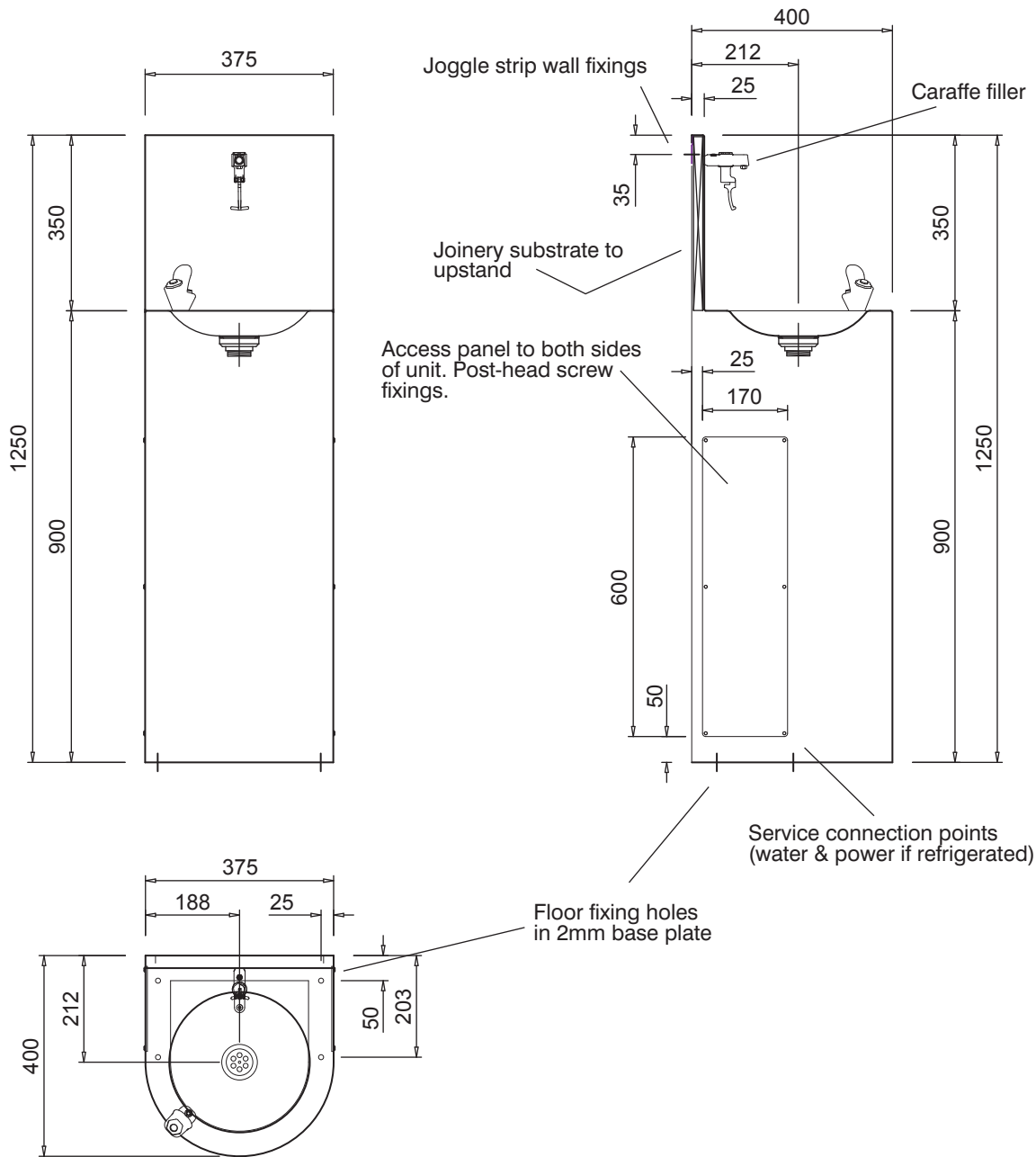


BRITEX

DFRE

The **BRITEX Free Standing Drinking Fountain** is designed for schools, sports facilities, work places and hospitals. The unique design allows for the unit to be mounted securely against a wall concealing fittings. The **DFRE** is fitted with an easy to use bubbler as well as a heavy duty drink bottle filler.

PRODUCT CODE:

DFRE

FREE STANDING DRINKING FOUNTAIN

DFRE**SPECIFICATIONS**

When specifying this product, please include the following details;

- Product **Name** and **Model No.**
- Product **Features.**

OPTIONS

- Refrigerated unit available.

Melbourne

Britex Place, Mirra Court
Bundoora
Victoria 3083
Telephone 1300 764 744
Fax (03) 9466 9044

Sydney

Unit 11, 16-18 Northumberland Rd
Taren Point
New South Wales 2229
Telephone 1300 764 744
Fax (02) 9531 2800



Quality
Endorsed
Company
ISO 9001 Lic4509
SAI Global

BRITEX
STAINLESS STEEL FABRICATED PRODUCTS

SINCE
1938

www.britex.com.au

e-mail info@britex.com.au

A.B.N. 83 004 309 737

Represented in all states of Australia, throughout Asia and the Pacific Regions.

All product manufacturing by **BRITEX** can be adapted to suit your special application.

Allow 5mm tolerance for setout dimensions given in these drawings. Details accurate at time of print.

As **BRITEX** is always committed to improving on design and quality, it is possible that some details may alter without notice.